

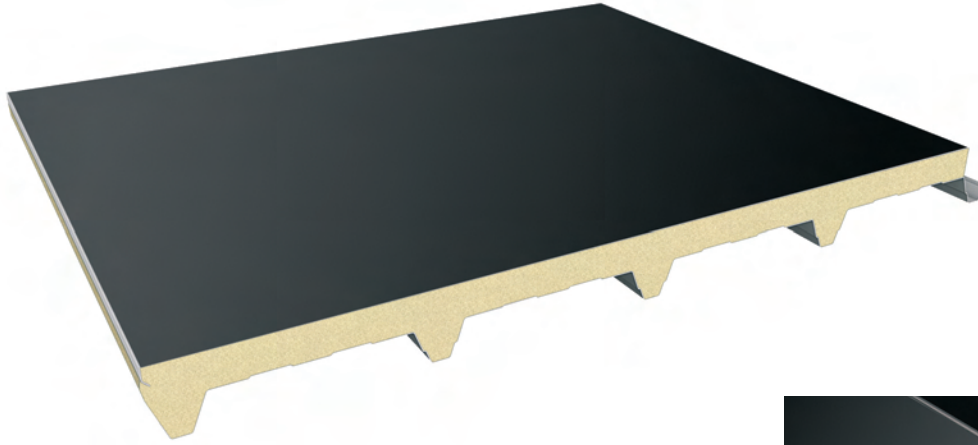
# Mono PENTA Deck

Pannelli copertura in PUR / PIR con supporto esterno in cartongfetro bitumato

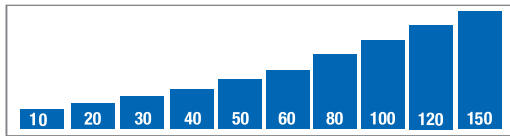
Roof panels with PUR / PIR insulation and external support in bitumized felt paper

Dachpaneele, isoliert mit PUR / PIR Schaum und mit Außenseite aus bitumen-Filzkarton

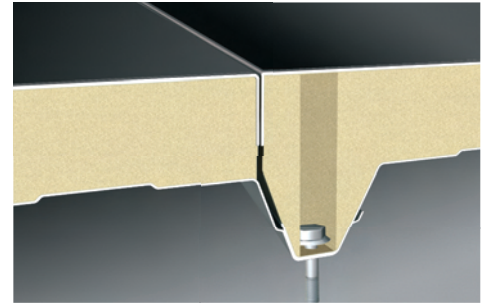
Panneaux de couverture avec isolation en PUR / PIR et avec le support extérieure en carton-feutre bitumé



- Spessore (mm) • Plattenstärke
- Thickness • Epaisseur



PARTICOLARE DEL GIUNTO  
RUIP V ÖÖVCS



Spessore (mm) / Thickness	Trasmittanza Termica / Thermal Transmittance in accordo/ according to UNI EN ISO 6946 $W_{m} / m^2K$	Trasmittanza Termica / Thermal Transmittance in accordo/ according to EN ISO 10271 $W_{m} / m^2K$	Condizione termica dichiarata / Declared thermal condition in accordo/ according to UNI EN ISO 6946 $\lambda_{0} / m^2K$
10	2,22	1,4	\$29
20	1,2	0,94	
30	0,89	0,7	
40	0,6	0,5	
50	0,5*	0,4	
60	0,4+	0,41	\$2
80	0,34	0,31	
100	0,2	0,25	\$2+
120	0,22	0,21	
150	0,1	0,1	

\* I valori di trasmittanza termica sono calcolati in accordo alla UNI EN ISO 6946, sono stati considerati gli spessori medi del PUR / PIR e non includono i ponti termici del giunto longitudinale.  
The thermal transmittance values are calculated in accordance with UNI EN ISO 6946, the average thicknesses of the PUR / PIR have been considered and do not include the thermal bridges of the longitudinal joint.

## DISEGNO TECNICO / SECTION DETAIL

